

№ 11

WATERLOO PLACE

WATERLOO
PLACE SW1
CITY OF WESTMINSTER

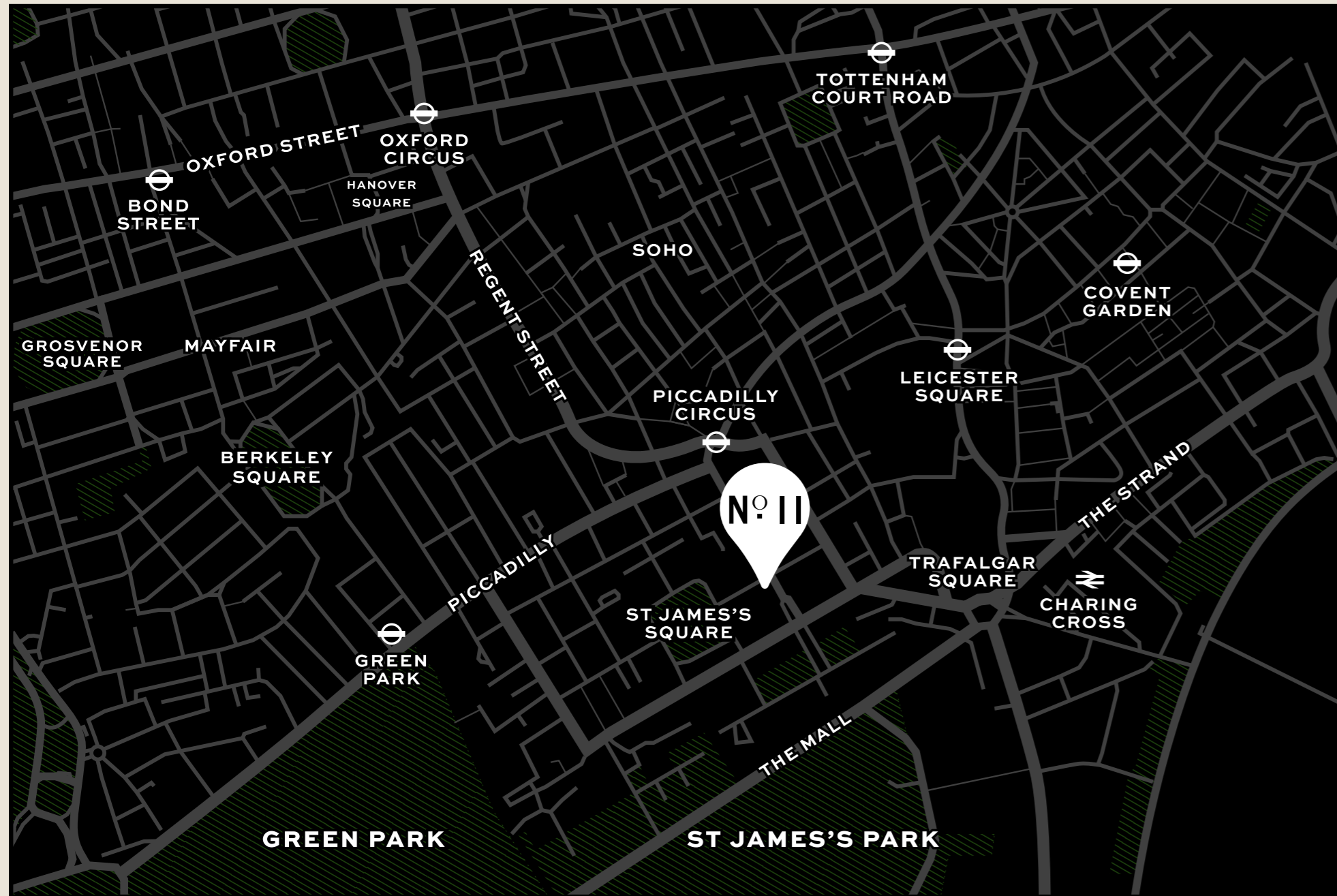
WATERLOO
PLACE SW1
CITY OF WESTMINSTER

WATERLOO
PLACE SW1
CITY OF WESTMINSTER

WATERLOO
PLACE SW1
CITY OF WESTMINSTER

A NEW VIEW OF LONDON

A rare opportunity to occupy 5,014 sq ft of exceptional, newly refurbished office space in an enviable position with views towards St James's Park.

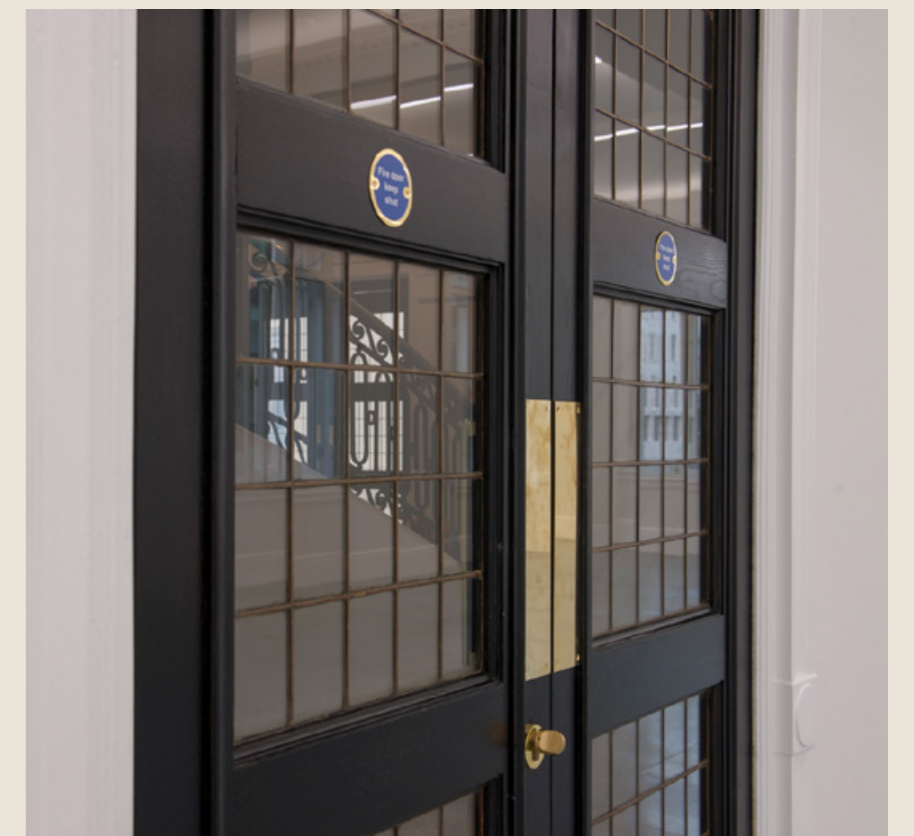


A 5 minute walk to **COVENT GARDEN**, a few minutes from the buzz of **SOHO** and a short stroll from the green spaces of **ST JAMES'S PARK**, this is a location that champions everything Central London has to offer.



THE REFURBISHMENT

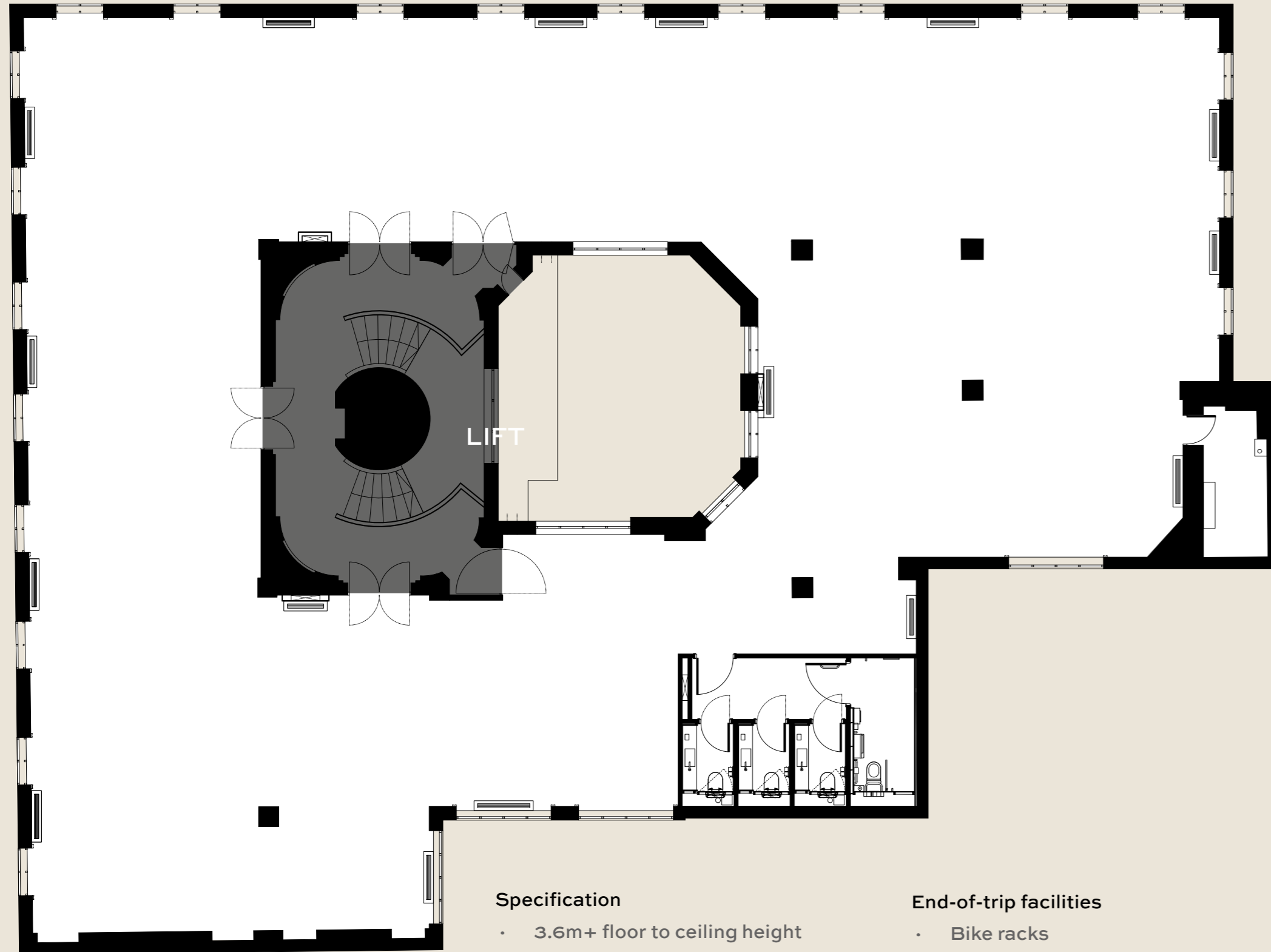
The manned reception has been sensitively and tastefully refurbished in keeping with the heritage of the architecture and original design of the building.





SPACEPLAN

SIZE: 5,014 SQ FT



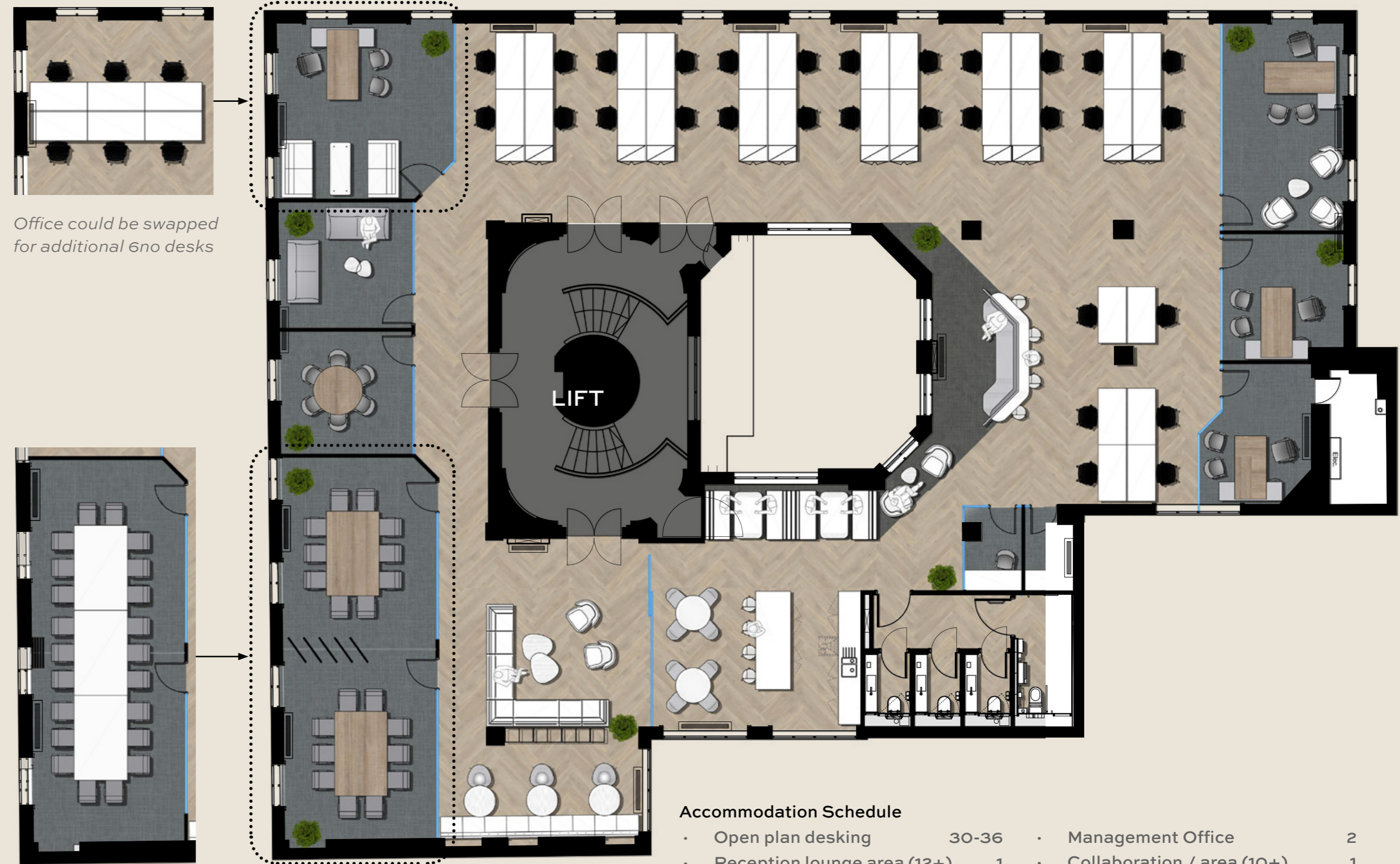
Specification

- 3.6m+ floor to ceiling height
- LED lighting
- Original period cornicing
- Air conditioning with fresh air ventilation
- Timber casement windows with secondary glazing
- New WCs
- Lift

End-of-trip facilities

- Bike racks
- Showers and changing facilities
- Secure lockers
- Bike repair station

CELLULAR



Office could be swapped for additional 6no desks

Meeting rooms open into larger boardroom

Accommodation Schedule

• Open plan desking	30-36	• Management Office	2
• Reception lounge area (12+)	1	• Collaboration / area (10+)	1
• Meeting room (10)	2	• Open sofa booths	2
• Combined boardroom (22)	1	• Phone booth	2
• Meeting room (6)	1	• Teapoint	1
• Soft meeting room (4)	1	• Breakout area (30+)	4
• Executive office	2		

Plans show indicative layout and are subject to further site survey

SPACEPLAN

LOW DENSITY



Accommodation Schedule

• Open plan desking	38	• Collaboration / hot desks (6)	1
• Reception lounge area (12+)	1	• Open sofa booths	2
• Boardroom (14)	1	• Teapoint	1
• Meeting room (8)	2	• Breakout area (30+)	1
• Meeting room (2)	1	• WC's	4
• Executive office	1		

Plans show indicative layout and are subject to further site survey

HIGH DENSITY



Accommodation Schedule

• Open plan desking	46	• Collaboration / hot desks (6)	1
• Reception lounge area (12+)	1	• Open sofa booths	2
• Boardroom (14)	1	• Teapoint	1
• Meeting room (8)	2	• Breakout area (30+)	1
• Meeting room (2)	1	• WC's	4
• Executive office	1		

Plans show indicative layout and are subject to further site survey

GET IN TOUCH

BLUEBOOK

TOR CUMING

E: tor@bluebooklondon.co.uk
T: 07714 089 823

ROBBIE ROWAN

E: robbie@bluebooklondon.co.uk
T: 07973 267 435



ELEVENWATERLOOPLACE.COM

